

McClung Museum's #StitchTogether Project



This embroidery design is based on Study of Butterflies, Caterpillar, Pupa, and Chrysalis, a print by Maria Sibylla Merian. Check out more about this print [here](#).

Supplies:

- embroidery needle
- a piece of fabric or clothing
- hoop (used 10 in. diameter)
- scissors
- embroidery floss:

- recommended colors:

2 shades of yellow



2 shades of brown



4 shades of blue



3 shades red or pink



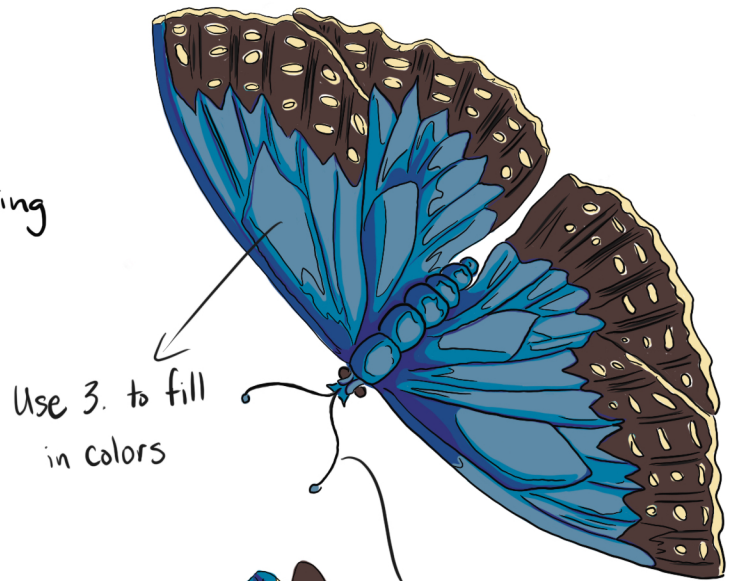
1 black



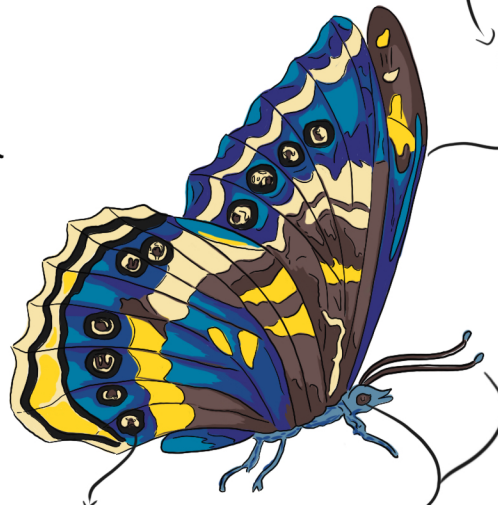
Stitches:

1. Split stitch
2. Satin stitch
3. French Knot

- Need help? Check out the tutorial videos for each stitch linked above.



Use 3. to fill in colors



1. or 2. make good outlines

Use 4. to add depth and texture (optional)



Small overlapping straight stitches create a fuzzy look (optional)

For a traceable outline and detailed instructions see page two.

Share your progress, ask a question, or suggest your favorite piece for the next pattern:

- Tag: @mcclungmuseum & #stitchtogether
- Email us: museum@utk.edu

McCLUNG MUSEUM
of Natural History and Culture

McClung Museum's #StitchTogether Project



This embroidery design is based on Study of Butterflies, Caterpillar, Pupa, and Chrysalis, a print by Maria Sibylla Merian. Check out more about this print [here](#).

Instructions:

- Place fabric on hoop making sure it's taught.

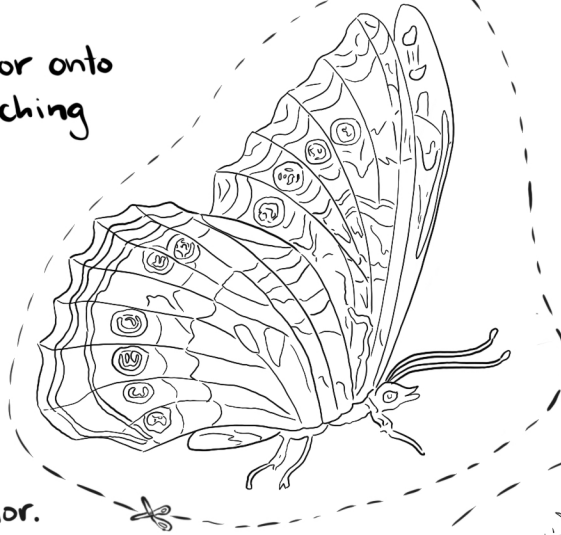
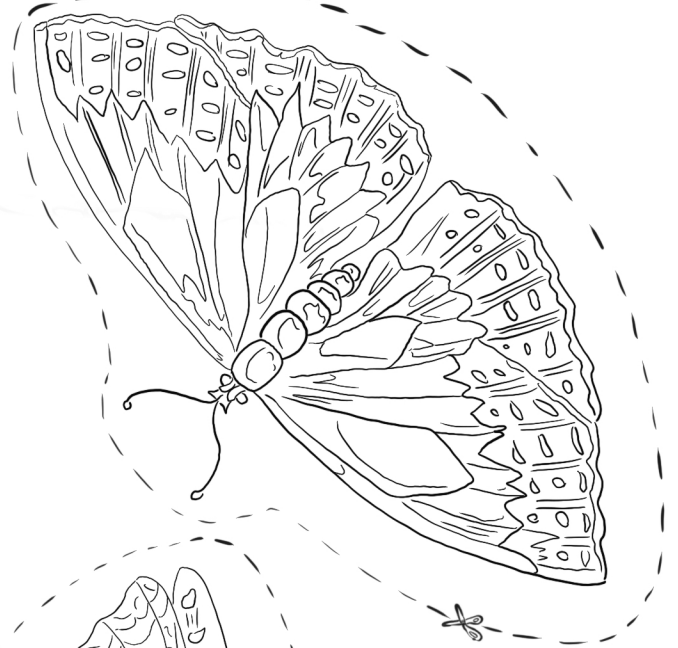
- Draw or trace the design onto the fabric with a pencil. Increase or decrease the amount of detail depending on your comfort level and the size you want to sew.

- Thread your first color onto the needle and begin stitching using the colored guide from page one or black.

- You can start by stitching an outline with the split stitch. Then continue with the split stitch or use the satin stitch to fill in the color.

- Add any final details like French knots on the butterfly wings.

- Sit back and take in your awesome work! 😊



Share your progress, ask a question, or suggest your favorite piece for the next pattern:

- Tag: @mcclungmuseum & #stitchtogether
- Email us: museum@utk.edu

McCLUNG MUSEUM
of Natural History and Culture