



McCLUNG MUSEUM
of Natural History and Culture

QUARTERLY

Issue No. 14 | May 2019

Letter from the Director



This will be my last report for the quarterly newsletter as I move toward retirement in July. I can report that the director search has identified three highly qualified sitting directors and they have each visited the University, talked with staff and stakeholders, and presented their views on the role of university museums. The search committee's recommendations have been conveyed to the Provost for a decision, and an announcement will be forthcoming.

The last 29 years have flown by. I can say that I have enjoyed each year and I am proud of what the museum has become. There will, of course, be challenges as the institution works through the issues of NAGPRA, rapid technological and pedagogical changes, and the problems of a sixty-year-old building. However, the museum is sound financially and has a talented, professional staff that I am confident will address these issues and will take us to the next level. I implore you, our supporters, to join us in achieving this vision.

Jefferson Chapman, Director

On the front cover: **Kaku**, 2014, John Hitchcock (American/Comanche/Kiowa, born 1967), from the portfolio *Drawn from the McClung Museum*, Screenprint, Edition: 1/30, Gift of the artist, 2015.1.15. Designed in response to an Ojibwa apron (2006.8.2) in the museum's collections.

Debut: Recent Acquisitions



Study for *The Weeping Magdalene* (detail), 1905, Lloyd Branson (American, 1853–1925), Oil on board, Museum purchase made possible by Gene and Lana Branson, Sally S. Branson, and John Z.C. Thomas, 2018.12.

At any given time, most museums only display a small percentage of their collections. Our upcoming exhibition, *Debut: Recent Acquisitions*, which opens to members on June 13 and runs through September 1, will highlight recent additions to our collections, most of which have never been exhibited.

From ancient Peruvian ceramics and new acquisitions for our extensive map collection, to Cherokee carving and modern and contemporary works on paper, the thirty works in the show reflect the enormous diversity of the McClung's holdings, and the generosity of donors who helped to add important objects to our collections.

The exhibition will detail how museums acquire and take care of the objects in their permanent collections, and will serve as a unique opportunity to conserve objects in our collections. As you will read in the Research section of the newsletter, this ensures that our collections have a long life for display and teaching.

The objects in *Debut* illustrate the work of museum staff to fill cultural gaps needed to support the McClung's educational mission. These treasures underscore the museum's continued relevancy as a site for inspiration and pondering our world and its wonders.

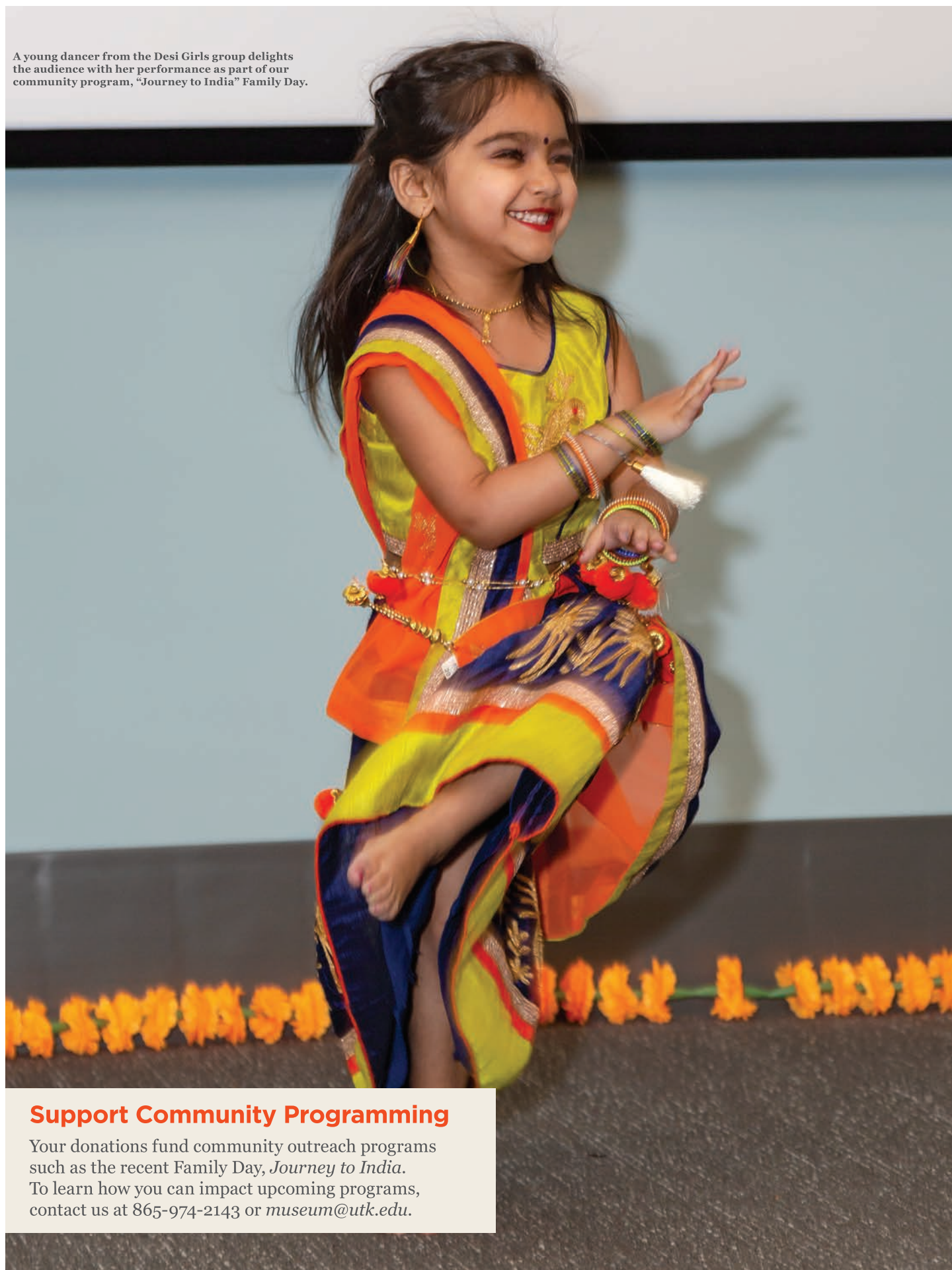
Exhibition programming will include an August Stroller Tour, a Family Day, an Art Camp, and events for adult audiences.

Debut is curated by Assistant Director and Curator of Arts & Culture Collections, Cat Shteynberg. The exhibition is made possible by generous support from the Elaine Altman Evans Museum Fund and Elizabeth and David Etnier.



Seated Female Figure, c. 100 BCE–250 CE, Nayarit, Mexico, Ceramic and pigment, Gift of the Pecor Family, 2017.3.1.

A young dancer from the Desi Girls group delights the audience with her performance as part of our community program, "Journey to India" Family Day.



Support Community Programming

Your donations fund community outreach programs such as the recent Family Day, *Journey to India*. To learn how you can impact upcoming programs, contact us at 865-974-2143 or museum@utk.edu.

Director Jeff Chapman to Retire in July



Jeff poses in front of the newly installed Edmontosaurus sculpture in front of McClung Museum, 2013.

As our members and supporters are aware, the museum's Executive Director Jeff Chapman will be retiring on July 1 after almost thirty years at the helm of the McClung Museum. Since taking on the role of museum director in 1990, he has transformed the museum through the establishment of the museum's first ever membership program; the creation of K-12 and university educational programs; the vast expansion of the museum's permanent collections; and in his support of scholarship and professionalism at the museum.

The museum's reputation for excellence was sealed by his oversight of three separate accreditations awarded by the American Alliance of Museums—the museum field's mark of credibility, and a distinction held only by two Knoxville museums.

Jeff is highly regarded amongst his peers and by museum supporters alike for his professionalism, scholarship, and enthusiasm. His tenure at the McClung has been impressive, with a variety of acclaimed exhibitions, and the development of many strategic campus and community collaborations.

Through his leadership, the museum established Knoxville's first Spanish-language museum program, *iVamos al Museo!*, and key UT partnerships with departments including the College of Nursing to hone PhD candidates' critical thinking skills by engaging with art.

In addition to organizing exhibitions, Chapman spearheaded the acquisition of some of the museum's most important objects, including an ancient sandstone sculpture that is the female companion to the State Artifact of Tennessee, recent acquisitions of Islamic art, "Monty," a 24-foot-long bronze skeleton of an Edmontosaurus, and hundreds of antique maps and natural history prints, as well as archaeological artifacts and malacological specimens.

Help the museum celebrate Jeff's legacy. Save the date for a special dinner in honor of Jeff and fundraiser for the Jefferson Chapman Endowed Directorship on June 20 at Cherokee Country Club. For details, visit: tiny.utk.edu/chapman.



Civil Rights leader, Reverend Harold Middlebrook, speaks with Chapman at the opening for the exhibition, *For All the World to See: Visual Culture and the Struggle for Civil Rights*.

Research

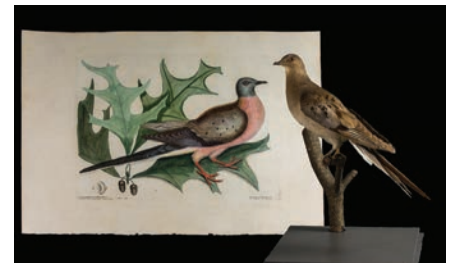


Damage to the pigeon's claw kept it from being displayed or used in teaching. The newly conserved pigeon will be on exhibit this summer.

In preparation for the upcoming exhibition, *Debut: Recent Acquisitions*, the museum worked with a conservator to stabilize a rare 19th-century taxidermied passenger pigeon in our permanent collections. The specimen will be displayed alongside a recent acquisition, a 1754 print of a passenger pigeon by the renowned natural historian, Mark Catesby.

The passenger pigeon, which went extinct in 1914, is one of the most popular objects in the museum's collections for teaching. A tremendous number of university classes from disciplines as broad as Philosophy and Wildlife & Fisheries have used the bird in object-based learning sessions discussing animal extinction, changing attitudes towards the environment, and human impact on the natural world. However, the pigeon's claw was at risk of coming detached from its ankle, making it too fragile to pull for classes or exhibition.

The conservator was able to clean the pigeon and secure the ankle to prevent further deformation and separation of the tissue. Support from generous donors like you makes crucial collections care work like this possible.



Left: *Palumbus Migratorius: The Pigeon of Passage*, 1754, Mark Catesby (English, c. 1682–1749), Plate 23, Volume 1 from *Natural History of Carolina, Florida and the Bahama Islands*, Hand-colored engraving, Museum purchase, Ardath and Joel E. Rynning Acquisition Fund, 2018.1.1. Right: *Taxidermy Passenger Pigeon*, c. 1900, Museum object, 2014.23.1.

Community Engagement

Happy 210th Birthday, Darwin!

Continuing our tradition, February's family day honored scientist Charles Darwin and his accomplishments. The event brought in graduate students from the Department of Ecology and Evolutionary Biology (EEB) and the Department of Earth and Planetary Science (EPS) to help lead tours and activity stations.

At this year's program, children excavated megalodon teeth while EPS students shared information about the extinct shark. EEB students hosted an Evolution board game tournament that encourages players to design their own species and compete for limited resources. Per tradition, punch and cake were offered and the public took pictures with a puppet of Darwin.



A Journey to India

In collaboration with the local Indian community the museum hosted "Journey to India", a celebration of culture and the temporary exhibition *Many Visions, Many Versions*. The program welcomed artists who delighted the public with traditional dances, music, and painting demonstrations. Performers, ranging in ages 7–17, offered a diverse repertoire of dance styles including Bollywood and Bharatnatyam.

Additionally, visitors enjoyed activity stations covering themes such as mehndi tattoos, Hindi language, crafts based on Warli paintings, and sari draping. This event was made possible thanks to the generous contributions of numerous members from Knoxville's Indian community, who not only contributed financially, but donated their time and talents to the program.

From Criminal to Citizen

This April, we welcomed Indian litigator, Arundhati Katju, to campus. Katju discussed the ground-breaking case that she argued before the India's Supreme Court in 2018. Together with her team and litigants, Katju overturned the 157-year law that outlawed same-sex relationships in India. The ruling decriminalized LGBTQ couples and secured their legal equality.

Her inspiring lecture proved the impact that a single person can have on a global scale. She was presented as a part of *Many Visions, Many Versions*' programming in collaboration with UT's College of Law and Sex Week. The program was sponsored by Merchant & Gould.



In the Spotlight: Kandi Hollenbach



The museum would like to welcome Kandi Hollenbach, assistant professor in the Department of Anthropology. She recently joined the McClung staff as the Associate Curator of Paleoethnobotany. Kandi will split her time between the department, and taking care of the museum's important archaeological and modern plant collections. She will also pursue grants and mentor students.

Kandi brings with her decades of experience in the field. She received her PhD from the University of North Carolina, Chapel Hill, where her research focused on gathering and foodways during the Late Paleoindian and Early Archaic periods in Tennessee and Alabama. She has since broadened her research to include foodways of early native and historical farmers in the South.

She is especially interested in the museum's modern comparative seed collection which allows researchers to help identify seeds found in archaeological contexts, as well as our botanical specimens (or vouchers) which afford a view into the actual plants and are sources of genetic data.

Shaping the Future with a New Internship Program

A career in museums can be difficult to achieve. As a place of higher learning, the McClung is committed to providing access to the profession by offering UT students deep, experiential learning opportunities as undergraduates. This spring, museum staff presented a revised internship program that took the hands-on work that the McClung is known for and added a holistic look into museum operations. Each Friday morning interns learned about all aspects of the museum field from the various professionals at the McClung. They also went on behind-the-scenes field trips to other area institutions.

Why do you love museums?

Emily Fastenau (*Art History Major, Arts & Culture Collections Intern*): “I love the idea of the mission, which at its core means that we have something we’re determined to care for on behalf of the public and cherish alongside them.”

Olivia Poston (*Architecture major, Design Intern*): “[When I was younger,] my family and I would spend weekends exploring museums. I fell in love with being surrounded by art and objects. I have been very fortunate to maintain this passion through school and opportunities like working with the McClung Museum. I am constantly inspired by the creative people who work in museums.”



[front l-r] Olivia Poston, Architecture major, Design Intern; Alexandra Watkins, History major, Archaeology Intern; Emma Vieser, Studio Art and Art History major, Exhibitions Curatorial Intern; Colby Sain, Geology major, Malacology Intern; [back l-r] Mallory Donoghue, History major, Development Intern; Emily Fastenau, Art History major, Arts & Culture Collections Intern; Caitlin Chitwood, Public Relations major, PR and Marketing Intern.



[top] Interns take a field trip to look at rare objects in UT Library's Special Collections.

[bottom] Arts & Culture Collections Intern, Emily Fastenau, works with a visiting researcher to verify the condition of a painting.

What role do museums play in society?

Mallory Donoghue (*History major, Development Intern*): “Museums have the power to create a uniquely immersive experience. Not only does the visitor learn about the artifacts or art in front of them, but they find themselves surrounded by a space dedicated specifically to conveying context and meaning.”

Colby Sain (*Geology major, Malacology Intern*): “They allow a person to feel somewhere that does not exist outside the museum. It’s a place where a dream world is made for people to disappear into.”

What is next for you?

Emma Vieser (*Studio Art and Art History major, Exhibitions Curatorial Intern*): “As people question the ethics of the current art history canon, I hope to be able to act as a platform for underrepresented voices. Too often, either the story of an object or the voice of the artist gets lost to tailor to the curator’s narrative, which makes museums inaccessible for everyone except a specific class of people.”

Caitlin Chitwood, (*Public Relations major, PR and Marketing Intern*): “In the future I want to work in the nonprofit sector. I love coming up with fun ideas to raise money for organizations that mean so much to me!”



Curatorial intern Emma Vieser writes labels for an upcoming exhibition.



People and Events

A. *Many Visions, Many Versions* Opening.

Museum members take a tour of special exhibition, *Many Visions, Many Versions: Contemporary Indigenous Art from India*, led by the exhibition's primary collectors, Umesh and Sunanda Gaur during the opening reception.

B. Lark Mason Event in TX.

Steve Catlett, Jeff Chapman, and Lark Mason (L to R) pose during an alumni event in New Braunfels, TX hosted by Lark Mason ('77) and his wife Erica.

C. Refreshed Object Study Room.

The remodeled Object Study Room was put to use for the first time this semester. We showcased art from the 2015 "Drawn for McClung" portfolio for Doctoral students in UT's College of Nursing program. Funding for new furnishings was provided by the UT Alliance of Women Philanthropists.

D. *Unity in Diversity*.

Manthan, an organization for students that came to UT from India for various degree programs, held an event at the museum that celebrated the breadth of cultures comprising their home nation. Students planned a program with Indian food, music, and displays to share with guests from across campus.



SUMMER CAMPS at McCLUNG



Camps	Ages	Dates	Time	Cost	Registration Deadline
Fossil Camp	8 – 10	June 4 – 7	9am – 1pm	\$80	May 27
Dino Explorers	4 – 5	June 11 – 13	9am – 12pm	\$60	June 3
Jurassic Kids	2 – 3 + caregiver	June 18 – 20	9am – 11am	\$35	June 10
Art Masters	5 – 7	June 25 – 28	9am – 1pm	\$80	June 17

<https://tiny.utk.edu/mcclungsummercamps>

**McClung Museum of
Natural History & Culture**

1327 Circle Park Drive
Knoxville, TN 37996

mcclungmuseum.utk.edu

Event Calendar

May

5/6 Stroller Tour: *Birds of a Feather*

5/18 Family Day: *Inspirations and Creations*

5/27 Museum Closed for Memorial Day

June

6/3 Stroller Tour: *Fossil Fun*

6/4-6/7 Fossil Camp

6/11-6/13 Dino Explorers Camp

6/13 *Debut* Members Exhibition Opening

6/18-6/20 Jurassic Kids Camp

6/20 Jefferson Chapman Endowed Directorship Fundraiser

6/22 Family Day: *Geology Rocks*

6/25-6/28 Art Masters Camp

July

7/4 Museum Closed for Independence Day

7/8 Stroller Tour: *Sculpt It*

7/18 Film Screening: *306 Hollywood*

7/20 Family Day: *Stories and Illustrations*

New Museum Membership Cards



New membership cards will be available at the June 13 member's opening.

The new cards also give our members free entry into dozens of museums in the Southeast, as part of the Southeastern Museums Reciprocal Membership program.

Upcoming Museum Closures

A reminder that the museum will be closed on **Memorial Day, May 27**, and on **Independence Day, July 4**.